



invent

DStat

A Utility für Storage Performance Monitoring und Analysis

Dipl. Ing. Dr. Wolfgang Burger
Technical consultant

© 2004 Hewlett-Packard Development Company, L.P.
The information contained herein is subject to change without notice



invent

Agenda

- Design considerations
- Components (Data Collector & Monitor)
- Examples
- HW & SW Requirements

www.decus.de <<http://www.decus.de>>

2



Design considerations (1)

- Easy to handle
- GUI
- Scalable
- Access
 - serial line
 - via terminal server
 - remote access (via RAS)
- Scheduled runs



Design considerations (2)

- Online and offline monitoring of performance data
- Separating data collection and data view
- Interface to Microsoft standard products (Excel)
- Interface to PerfDat and T4
- Quick implementation

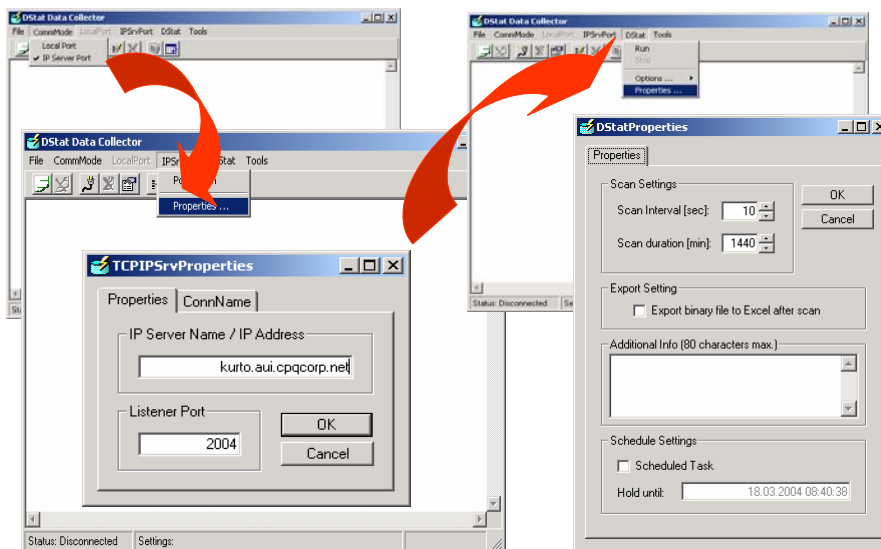


Components of the tool

- Two images
 - DStat data collector
 - DStat monitor
- COM based VB applications with extensive use of API-calls
- Totally independent
- Single threaded
- Multi instances



DStat Collector



DStat Collector

The screenshot displays the DStat Collector application window. The 'Run' menu is open, with a red arrow pointing to the 'Run' option. Below it, another window shows a table with columns 'Elapsed Time' and 'Sample Count'. A second red arrow points from the 'Run' menu to this window. To the right, two line graphs are visible, showing data trends over time. The top graph has a y-axis from 0 to 400, and the bottom graph has a y-axis from 0 to 30. The status bar at the bottom indicates 'Status: Connected' and 'Server: kuto.au.cpqcorp.net, Port: 2001'.

www.decus.de <<http://www.decus.de>>

7

DStat Monitor

The screenshot displays the DStat Monitor application window. It features two line graphs. The top graph is titled 'Unit Attribute: UnitRate [Req/sec]' and has a y-axis from 0 to 400. The bottom graph is titled 'Unit Attribute: CtlQueue' and has a y-axis from 0 to 30. A 'Unit Selection' dialog box is open in the center, showing a table with columns 'Unit Selection', 'Description', and 'Color'. The status bar at the bottom indicates 'Selected Mode: Auto' and 'Samples monitored (valid/invalid): 7644 / 0'.

www.decus.de <<http://www.decus.de>>


8

DStat Example Validating configuration changes



DStat Example „hot“ unit detection






HW and SW requirements

- PC
 - Pentium III/500
 - 256 Mb RAM
- WIN 98
- WNT 4.0
- WIN 2000
- WIN / XP

www.decus.de <<http://www.decus.de>>

11



Contact information

- PerfDat@hp.com

www.decus.de <<http://www.decus.de>>

12

