

Konzepte für effektives SAN Management

Daniela Magee, Senior System Engineer
Brocade Communications Systems GmbH

06.April.2005



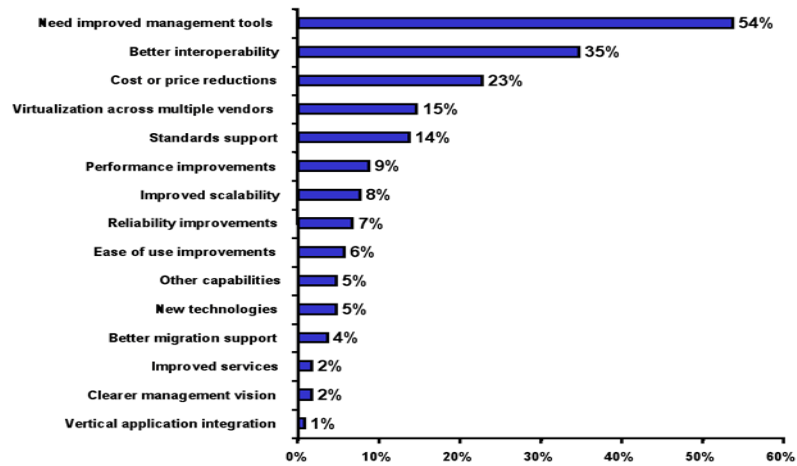
Agenda

1. Anforderungen an das SAN Management
2. Zusammenspiel der Brocade SAN Management Applikationen
3. Brocade und SMI-S
4. San Health Check Demo



Was wuenschen sich unsere Kunden am meisten ?

Improved Management Tools are Key Customer Need



Source

n = 132



Question asked: What are the top 2 capabilities that you need your storage vendors to deliver over the next 12-18 months?

Anforderungen an das SAN Management



© 2004 Brocade Communications Systems, Inc. All Rights Reserved.

Brocade Confidential, Portions Presented Under NDA

Anforderung an SAN Management Tools

- Instandhaltung der SAN Komponenten
- Device Monitoring (Switches, ISL's, HBAs, etc.)
- Connection Monitoring
- Capacity Planning (ISL's → SAN Design!)
- Performance Analysen und Trending
- Simulation & Change Management
- Provisioning



© 2004 Brocade Communications Systems, Inc. All Rights Reserved.

Brocade Confidential, Portions Presented Under NDA

Komponenten einer SAN Management Applikation

1. Konfigurations-Management zum Administrieren der Switche
2. Health Monitoring Komponente
3. Discovery Funktionalität um automatisiert neue Komponenten zu identifizieren und ins Monitoring aufnehmen zu können.
4. Report der aktuellen Konfiguration der Switche
5. Planungs- und Analyse-Komponente für das Ressource-, bzw. Performance- und Verfügbarkeits-Management
6. Automatisierungskomponente zur Abhandlung wiederkehrender Aufgaben.



© 2004 Brocade Communications Systems, Inc. All Rights Reserved.

Brocade Confidential, Portions Presented Under NDA

Brocade SAN Management Komponenten

1. Element Management Tool → Web Tools zur Administration der Switche
2. Fabric Management → Fabric Manager 4.4 zur Administration der SANs/Fabrics
3. Brocade API/SMI,s Scripting Toolkit → Automatisierung von wiederkehrenden Aufgaben, etc.
4. Switch basierte Tools zum Monitoring, Eventing, etc. → Fabric Watch, Advanced Performance Monitoring, etc.
5. Tools von Brocade Connect → Support Tool, SAN Health check Tool



© 2004 Brocade Communications Systems, Inc. All Rights Reserved.

Brocade Confidential, Portions Presented Under NDA

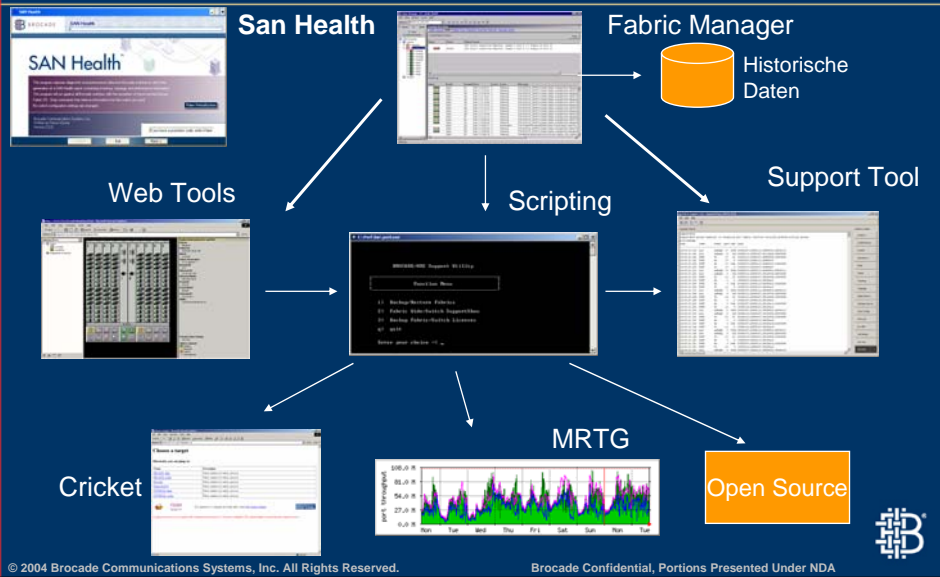
Zusammenspiel der Brocade SAN Management Applikationen



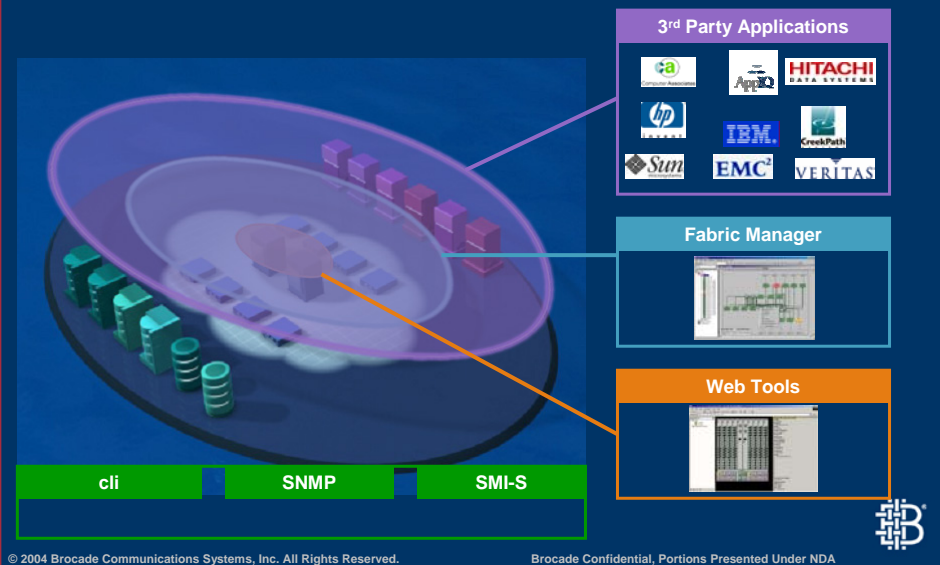
© 2004 Brocade Communications Systems, Inc. All Rights Reserved.

Brocade Confidential, Portions Presented Under NDA

Zusammenspiel der Komponenten

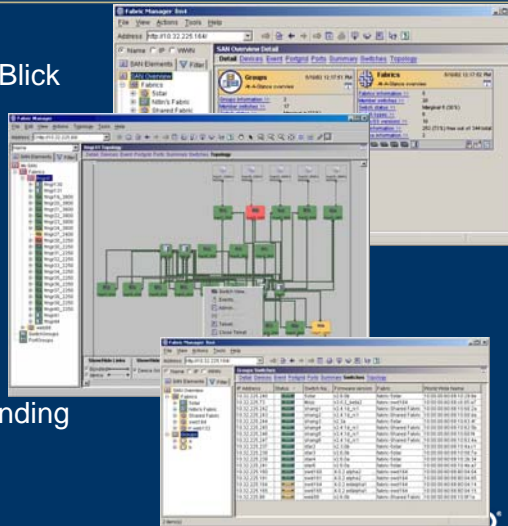


Brocade Fabric Management Strategy



Fabric Manager 4.4

- Fabric basierte Topologie
- Alle Informationen auf einen Blick
- Fabric Snapshot/Vergleich
- Call Home
- Asset Tracking
- HBA Management
- ISL-Performance Monitoring
- Group Firmware Download
- Security Policy Einstellungen
- End to End Performance Trending
- FC Router Konfiguration
- FICON Unterstützung
- und weitere ...



© 2004 Brocade Communications Systems, Inc. All Rights Reserved.

Brocade Confidential, Portions Presented Under NDA



Brocade und SMI-S (Storage Mgmt. Initiative Specification)



© 2004 Brocade Communications Systems, Inc. All Rights Reserved.

Brocade Confidential, Portions Presented Under NDA



SMI-S: Was bietet Brocade an

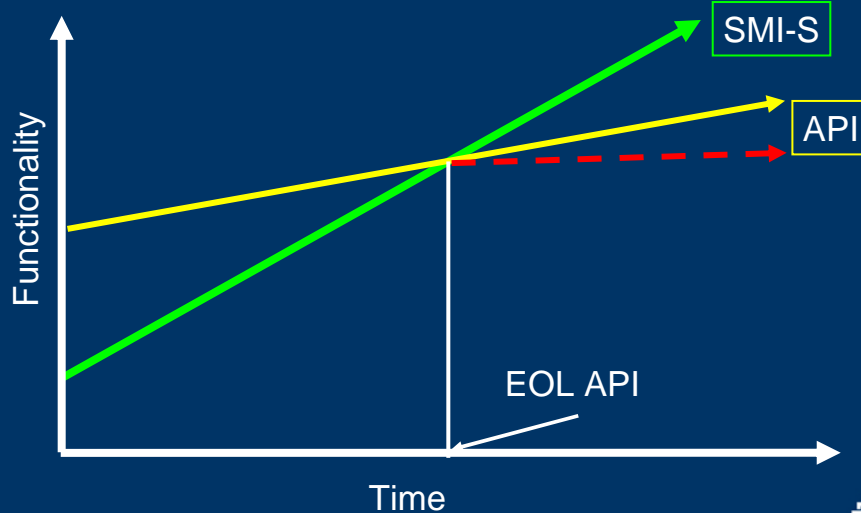
- Brocade Fabric Switches sind bereits alle SMI-S Version 1.0 compliant und haben den SNIA-Conformance Test erfolgreich bestanden
- User SMI-S 1.0 Agent ist führend in Bezug auf Robustness, Leistung und Funktionsvielfalt.
- Wir werden das SMI-S weiterhin treiben sodass unser Kunde von einer standard basierenden SAN Umgebung profitieren kann.



© 2004 Brocade Communications Systems, Inc. All Rights Reserved.

Brocade Confidential, Portions Presented Under NDA

Fabric Access - Entwicklung der API zu SMI-S



© 2004 Brocade Communications Systems, Inc. All Rights Reserved.

Brocade Confidential, Portions Presented Under NDA

Wie geht es weiter

Version 1.0 of SMI-S liefert das Fundament fuer Basis Discovery und Integration in Managment Umgebungen waehrend Version 1.1 (momentan i.d.Entwicklung) Funktionalitaeten wie Security, Performance, Data Copy Services sowie Povisioning adressiert.

Darueber hinaus wird auch Network Attached Storage, IP Networking und Tape Libraries beruecksichtigt.



© 2004 Brocade Communications Systems, Inc. All Rights Reserved.

Brocade Confidential, Portions Presented Under NDA

Weitere Info's und Literatur

- Setting Up and Understanding Brocade SNMP Version 1.0, 53-0000353-01
- Brocade MIB Reference Manual - Version 4.1.2, 53-000052 1-05
- LAN Guidelines For Brocade SilkWorm Switches – V1.0, 53-0000350-01
- <http://www.brocade.de/connect> for API Scripting Information
- Cricket Information: <http://cricket.sourceforge.net/>
- MRTG Information: <http://www.mrtg.org/>
- <http://www.brocade.com>
- <http://www.snia.org/smi/home>
- Fragen Sie auch Ihren Storage Partners nach deren Pläne bzgl. SMI-S Integration in deren eigene Management Tools
- Für Information über Brocade SMI-S Partner, kontaktieren Sie dev-program@brocade.com oder Ihr lokales Brocade Team



© 2004 Brocade Communications Systems, Inc. All Rights Reserved.

Brocade Confidential, Portions Presented Under NDA

SAN Health Check Demo



© 2004 Brocade Communications Systems, Inc. All Rights Reserved.

Brocade Confidential, Portions Presented Under NDA



SAN Health Check und Dokumentation



BROCADE
The intelligent platform for networking storage

Brocade SAN Health Utility

Faster, Easier SAN Analysis

Exclusively on
Brocade Connect and
Partner Network!

- SAN Health will help you easily audit and analyze your SAN
 - Inventory switches, firmware versions and fabric designs
 - Measure/check health statistics, performance statistics & error conditions
 - Produce a detailed report with inventory, recommendations, historical performance graphs and a Visio diagram



Get your **FREE CD**
or download SAN
Health today!



© 2004 Brocade Communications Systems, Inc. All Rights Reserved.

Brocade Confidential, Portions Presented Under NDA



Hier steckt der Mehrwert ;-)

BROCADE SAN Health

Enter Company Information and Report Return Options

Who is this SAN Health report being prepared for?

Company Name* [Brocade] Mr. Ms*

Address1* [1745 Technology Drive] First Name* [Andrew]

Address2* [] Last Name* [Smith]

City* [San Jose] Job Title* [SAN Administrator]

State/Province* [CA] Email* [asmilh@brocade.com]

Zip/Postal Code* [95110] Retype Email* [asmilh@brocade.com]

Country* [United States] Phone* [408-333-8000]

Relationship to Brocade* [Brocade Staff] (Determines the method used for report return)

Would you like to send a duplicate copy of this report to any of the following people?

A Brocade Engineer or staff member that you are working with

Brocade Support (in conjunction with an open support case)

An OEM Company/Professional Service Group/Systems Integrator that you are working with

Activity Log: 9:45:34 AM: SAN Health Started

1 Information, 0 Warnings, 0 Errors

Click on the activity Log to save or clear the log selected for audit.



© 2004 Brocade Communications Systems, Inc. All Rights Reserved.

Brocade Confidential, Portions Presented Under NDA





Vielen Dank



BROCADE
The intelligent platform for networking storage