




**Integration - Einfache Anbindung  
an ein SAP-System von .NET und  
Java**  
3H07

DECUS Symposium 2005, 7.04.2005

Ralf Günther  
Technical Consultant  
Hewlett-Packard Services GmbH



© 2004 Hewlett-Packard Development Company, L.P.  
The information contained herein is subject to change without notice



## Agenda

- Project Characteristics
- Project Overview
- Why is integration needed here?
- Building blocks of the solution
- Learned Lessons

April 20, 2005

2



## Project Characteristics

- Name of the Project: CATIS II
- Main Application Functionalities
  - Planning for consultants and project managers
  - Reporting of utilization, cost and revenue, resource management
- Timeline
  - Start: 1.09.2003
  - Test version available: 1.02.2004 (30 users)
  - Production version
    - for Switzerland: 1.05.2004 (180 users)
    - for Switzerland + Germany: 1.06.2004 (300 users)
    - for 90% of Europe: 1.01.2005 (2.500 users)
- Team
  - Start with Development Team of about 6 members
  - Two offshore resources - colleagues from DGS India HP

April 20, 2005

3




## CATIS II Overview

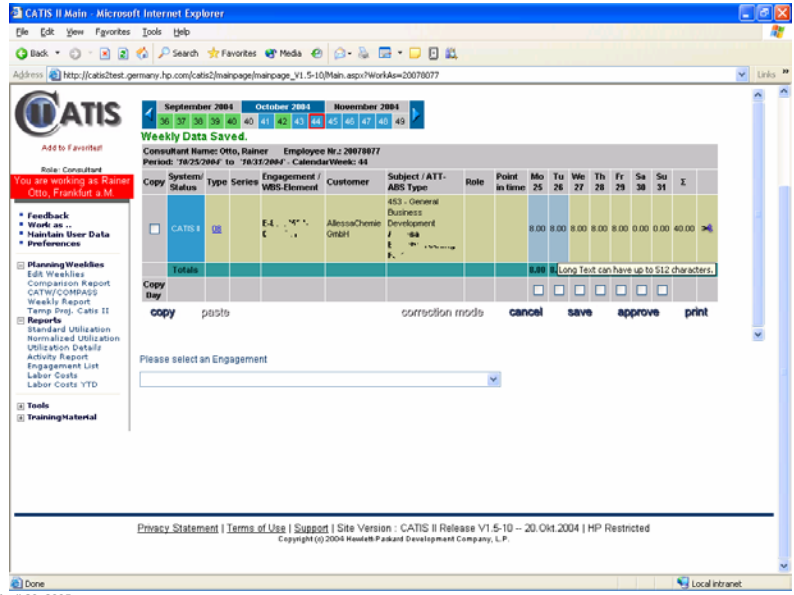
- CATIS II is a **web based management information system** for resource and capacity management.
- Main functional areas are
  - Edit Weeklies (Booking of Labor Data) and
  - Reporting
- CATIS II comes with a Web-based portal as
  - The main entry point and
  - Delivering role-based views/functionality

April 20, 2005

4

## CATIS II Consultant Forecast






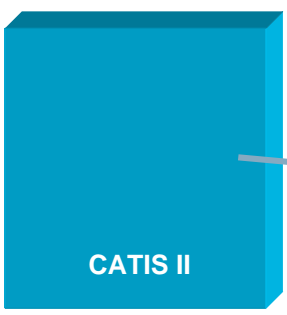
[Privacy Statement](#) | [Terms of Use](#) | [Support](#) | Site Version: CATIS II Release V1.5-10 - 20. Okt. 2004 | HP Restricted  
 Copyright (c) 2004 Hewlett-Packard Development Company, L.P.

April 20, 2005

5


## Application Integration urgently needed






**CATIS II**

?





**SAP 4.6 System  
Triaton**

**Responsibilities**

- Planning and Actual Labor Data
- Planning Labor Cost Data
- Resource Management (Skills, Availabilities)
- ...

- Financial Accounting
- Actual Labor Cost Data
- ...

April 20, 2005

6



## Building blocks of the solution

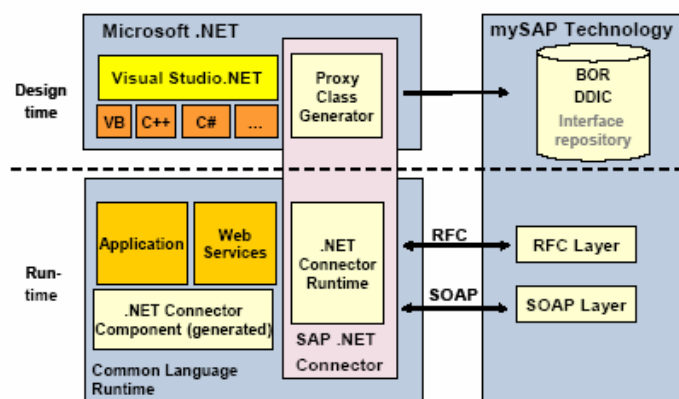
- SAP .NET/Java Connector
- HP Multithreaded SAP Access Device

April 20, 2005

7



## SAP .NET Connector



The SAP .NET Connector is a programming environment inside of Visual Studio .NET that enables communication between the Microsoft .NET platform and SAP Systems. It supports SAP Remote Function Calls (RFC) and Web services.

April 20, 2005

8



## Hands on SAP Integration ...



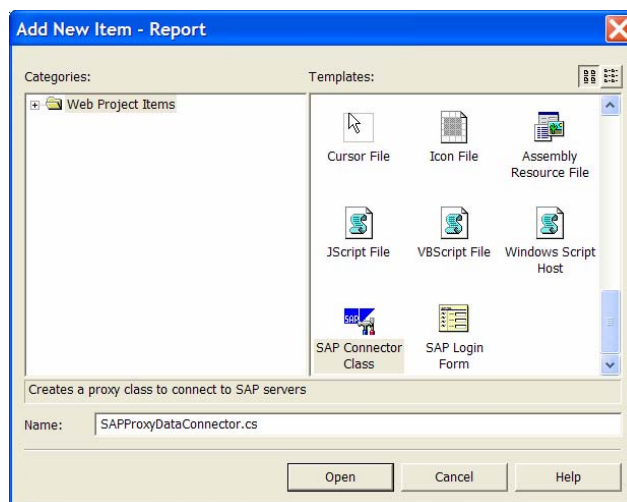
# Show Time

April 20, 2005

9



## Demo – Add SAPConnector

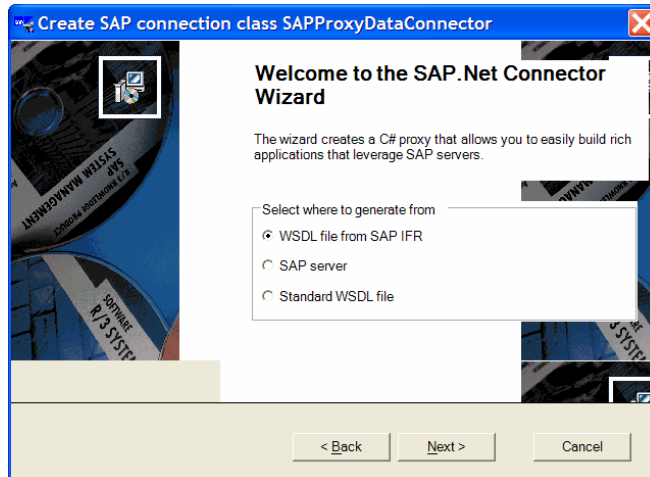


April 20, 2005

10



## Demo – Select where to generate from

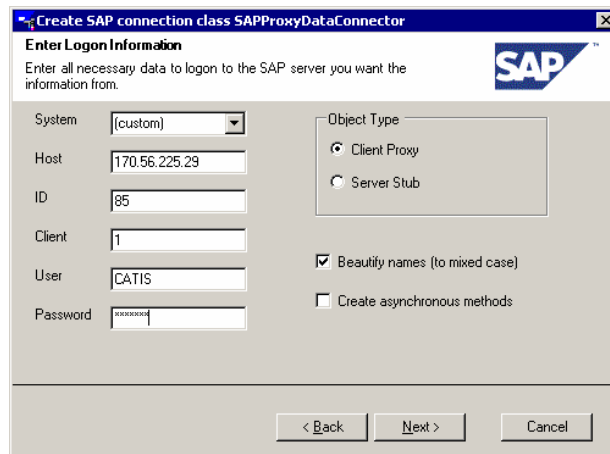


April 20, 2005

11



## Demo – enter Logon Information

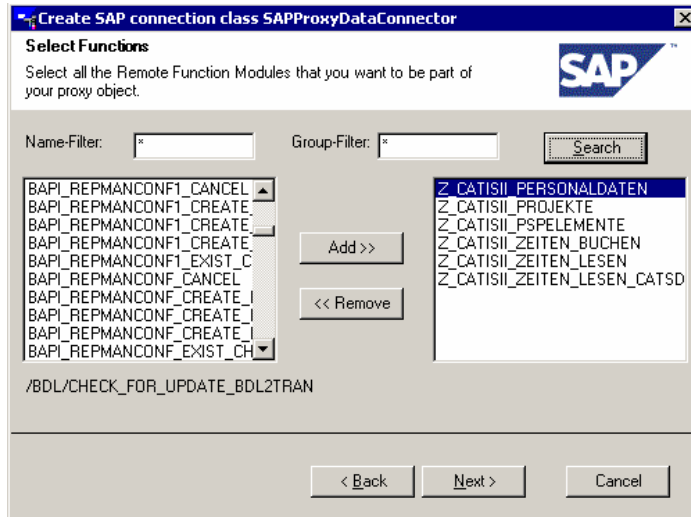


April 20, 2005

12



## Demo – Select Functions

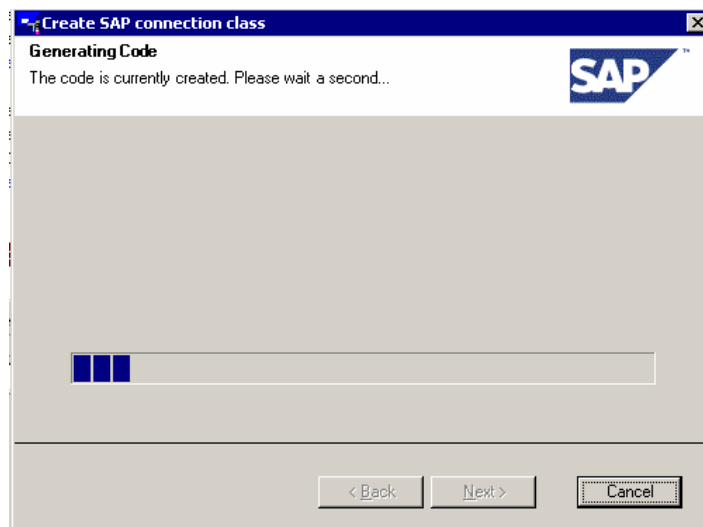


April 20, 2005

13



## Demo – Generating Code

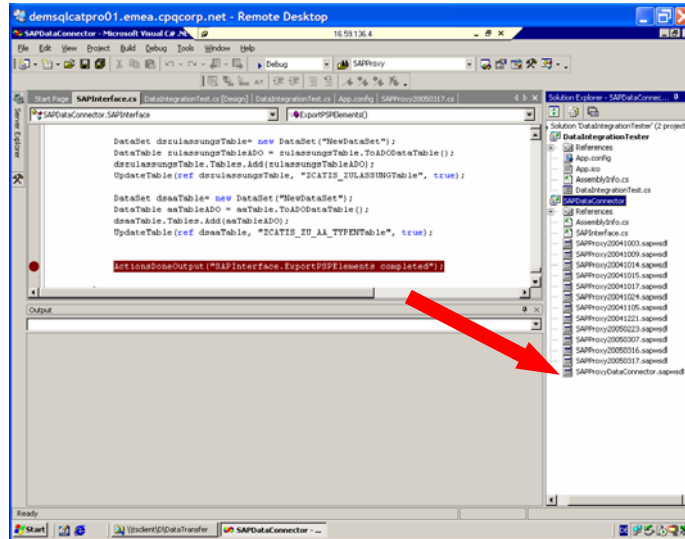


April 20, 2005

14



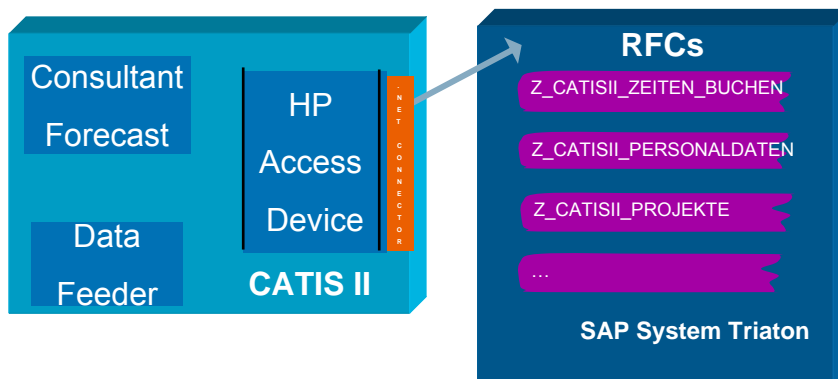
## Demo – result after proxy creation



April 20, 2005

15

## CATIS II Interfaces



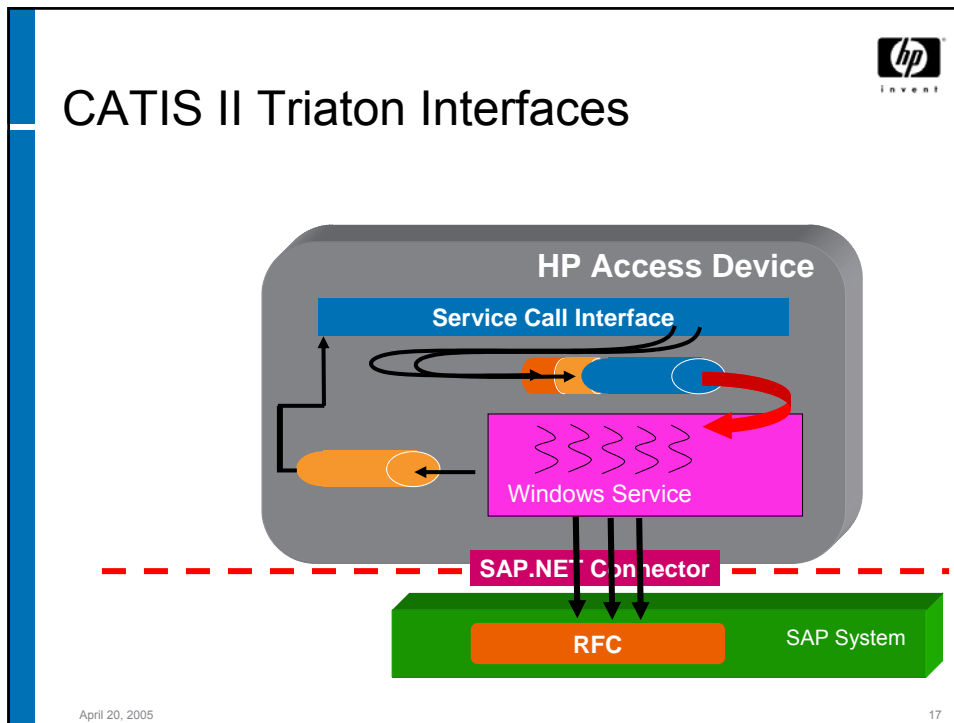
### Requirements on Access Device


- Mapping between CATIS II proprietary format to SAP Format
- Asynchronous decoupling between CATIS II and SAP
- Multithreaded support

April 20, 2005

16







## Learned Lessons also for future HP projects with you!

- Successful smooth integration needs additional investment (e.g. HP Access Device)
- SAP .NET Connector Technology is a stable integration platform for interfacing .NET and SAP
- Critical time consuming points are
  - Understanding the internal business processes
  - Finding the appropriate interfaces
  - Reuse of existing SAP RFC/BAPI interfaces
  - AND NOT the software development itself

April 20, 2005 18

Contact

Ralf Günther  
Technical Consultant  
HP Services Consultant & Integration  
Tel.: (02102) / 90 5366  
Mobile: (0175) 93 89 112  
Ralf.Guenther@hp.com

