

HP OpenVMS CIFS

Common Internet File System based on SAMBA

Günter Kriebel
Senior Consultant OpenVMS
Hewlett Packard GmbH
guenter.kriebel@hp.com



© 2006 Hewlett-Packard Development Company, L.P.
The information contained herein is subject to change without notice

CIFS < > SAMBA ??

- Samba :
 - OpenSource Tool
 - auf vielen Plattformen
 - weit verbreitet
- CIFS :
 - die aktuelle Implementierung auf OpenVMS

2 18 April 2007



Copyright © 2006 HP corporate presentation. All rights reserved.



Was ist SAMBA / CIFS?

- Open Source/Free Software, file and print services für SMB clients. (z.B. Windows clients)
- frei Verfügbar unter GNU General Public License.
- enthalten in den meisten UNIX and LINUX distributions
 - weit verbreitet, – Viele Bücher zu Samba
- unterstützt durch HP
 - HP Mitarbeiter in der Samba Entwicklung aktiv dabei
- Samba Community aktiv bei fixing bugs, adding features
 - 20 weltweit aktiv; 10-12 mit aktiven Checkins
- <http://www.samba.org>

3 18 April 2007



Pathworks / ASV -> CIFS : Gründe

- Updates des Pathworks Source Codes sind nicht mehr verfügbar (AT&T)
- Neue Versionen von Windows (VISTA) bringen zunehmend Probleme
- Implementierung neuer Technologie (Active Directory, LDAP, etc.)
- Sehr großer Aufwand nötig, um ASV up-to date zu bringen
- Plan : ASV auch weiterhin auf Alpha verfügbar
- Ziel: langfristig ASV durch CIFS zu ersetzen
- IA64: nur CIFS

4 18 April 2007



CIFS Planung

- Produktions Version - basierend auf Samba V3
- External Field Test – April 2007
- Integrity release - Juli 2007
- Alpha release – Juli 2007

- die folgenden CIFS Versionen basieren auf Samba V4.x
- Ziel: Migration ASV -> CIFS auf Alpha & I64

5 18 April 2007



Features

- Support für Integrity & Alpha Platforms
- Full file & print support
- MS Windows 2000 , XP und Vista`
- Active Directory MS Windows 2000 and later
- Name Resolution
- Service Announcement (browsing)
- Zusätze:
 - Utilities zur Migration von ASV to CIFS

6 18 April 2007



Features

- Cluster support `
- ASV & CIFS in der gleichen Domain
- International character set support
- Advanced CIFS Management support `
- CIFS kann Member Server oder Domain Controller sein
- OpenVMS ACL Support

7 18 April 2007

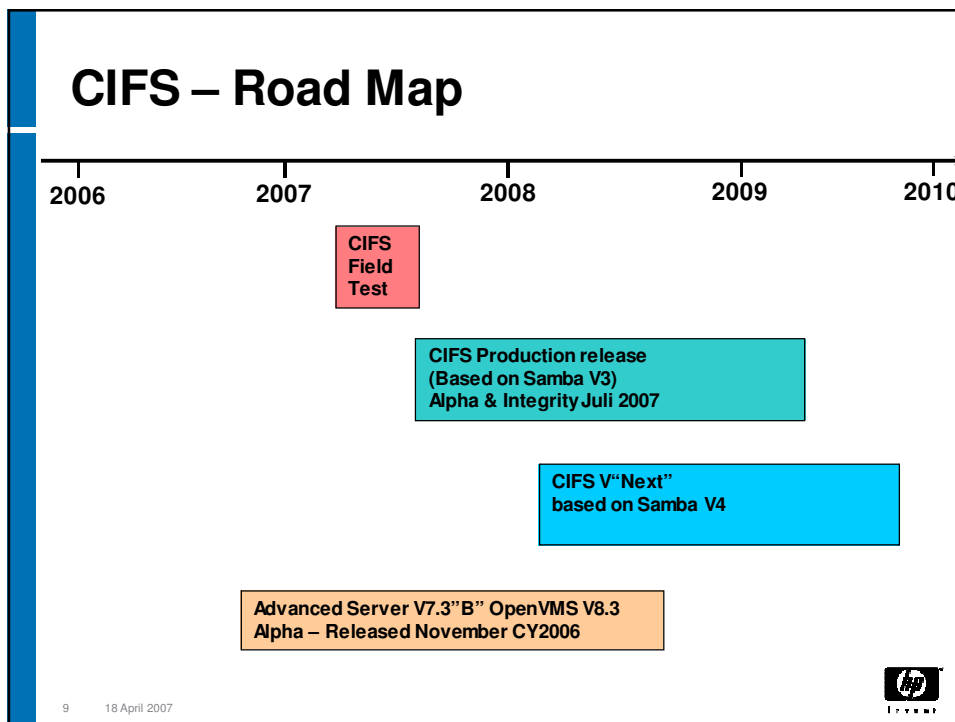


Features

- Mit MS Filenamen auf ODS-2 und ODS-5 disks
- Keine zusätzliche Lizenz erforderlich (CIFS ist enthalten in FOE, EOE and MCOE)
- keine zusätzliche Lizenz für CIFS Alpha
- Multiple TCP/IP stack support
- SWAT utility ``
- External authentication support
- Trust relationship support `

8 18 April 2007





Neu bei CIFS

- Keine Konfig-Utility wie bei Pathworks, sondern
- Konfigurations-File SMB.CONF

10 18 April 2007 

SMB.CONF

- Ein "INI" file, enthält alle Festlegungen, was SAMBA bereitstellt - und wie
- SMB.CONF ist normaler ASCII Text, einfach editierbar
- zur besseren Übersichtlichkeit in verschiedene Sections aufgeteilt.

<http://www.SAMBA.org/SAMBA/docs/man/manpages-3/smb.conf.5.html>

11 18 April 2007



CIFS Implementierung

CIFS besteht aus einer Reihe von (Hintergrund-) Prozessen (Daemons).
Im einzelnen:

NMBD – The NMBD handles the naming resolution & network browsing.

WINBINDD – Handles trust relationship`

SWAT – Samba Web Administrative Tool

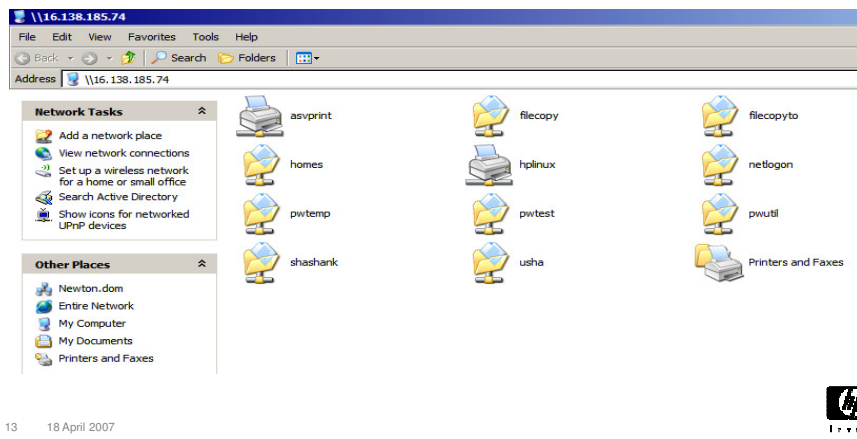
SMBD - The SMBD is responsible for providing shared file/printer resources. (1 per connected client)

12 18 April 2007



Connection from a Client

- CIFS users can connect from a client to the server like any other process
- A list of shared folders and files are displayed



Tools zu CIFS

- SMBSTATUS – This tool reports on current CIFS connections
- TDBDUMP – Tool for printing the contents of a TDB file
- TDBTOOL – Tool for manipulating the contents of a TDB file
- SMBCONTROL – This utility sends messages to NMBD, SMBD and Winbindd processes
- PDBEDIT – Tool used to manage the SAM database (Database of SAMBA users)
- NET – Tool for administration of CIFS and remote CIFS servers

14 18 April 2007



pdbedit Tool

pdbedit is a tool that can be used to manage the passdb backend. Pdbedit can be used to:

- add, remove, or modify user accounts.
- list user accounts.
- migrate user accounts.
- migrate group accounts.
- manage account policies.
- manage domain access policy settings.

The command to add users into pdbedit file is as follows:

```
$ pdbedit -a <username>
```

where `-a` option is used to add a user into the database. When adding a new user, pdbedit will also ask for the password to be used.

Example: \$ pdbedit -a test1

new password:

retype new password

For more information about how to use pdbedit, see the help of pdbedit by entering the following command:

```
$ pdbedit --help
```

15 18 April 2007



Migration Utility

Eine Migrations - Prozedur wird den Wechsel von Advanced Server zu CIFS erleichtern

- Share migration
- SAM database migration

16 18 April 2007



Cluster Compatibility/Support

- Will support cluster alias and failover to the extent that it is supported under TCP/IP Services
- Will support load balancing to the extent that it is supported under TCP/IP Services

17 18 April 2007



Delivery & Support

- Integrity
 - CIFS wird enthalten sein in FOE, EOE & MCOE's
 - Supported als Teil des Betriebssystems
 - Included on the OE Update Media (DVD)
 - Part of the Layered Products Distribution
- Alpha
 - "QM" 2-5-2 part number but @ no cost (\$0) for services
 - Service pricing as yet not established, similar to ASV
 - Part of CY07 Software Products Library
- http://h71000.www7.hp.com/network/CIFS_for_Samba.html for downloads of CIFS

18 18 April 2007



Empfehlung

- CIFS ist funktional etwa gleichwertig zu Pathworks / ASV
- viele Details sind anders und ungewohnt
- deshalb möglichst frühzeitig damit beginnen und kennenlernen
- in der ersten Version wird u.U. noch nicht alles perfekt und performant laufen
- die folgenden Kontakt-Adressen nutzen !

19 18 April 2007



Reference Materials

- For more details on SAMBA, refer to the following URL:
<http://www.samba.org>
- For more information about configuration file (SMB.CONF), refer to the following URL:
<http://www.SAMBA.org/SAMBA/docs/man/manpages-3/smb.conf.5.html>
- For more details about Migration, refer to the following URL:
<http://www.samba.org/samba/docs/man/Samba-Guide/ntmigration.html>
- For Troubleshooting Techniques, refer to the following URL:
http://www.SAMBA.org/SAMBA/docs/using_SAMBA/ch12.html
<http://www.SAMBA.org/SAMBA/docs/man/SAMBA3-HOWTO/troubleshooting.html>

20 18 April 2007



CIFS Information and Feedback

- CIFS home page
[http://h71000.www7.hp.com/network/CIFS for Samba.html](http://h71000.www7.hp.com/network/CIFS_for_Samba.html)
- “Feedback” hot link button located at bottom of CIFS web page
- E-mail address openvms@hp.com
- E-mail address "OpenVMSCIFS@HP.COM"

21 18 April 2007



CIFS Program Team

- Business Manager - Larry Woodcome
 - Email Lawrence.woodcome@hp.com
 - Telephone 603-884-5419
- Program Manager/Technical leader - Gaitan D'Antoni
 - Email: Gaitan.dantoni@hp.com
 - Telephone: 603-884-0594
- Engineering Development Mgr – Uday Kumar Chaudhari
- Email: udaykumar.chaudhari@hp.com
 - Telephone: +91 80 2225 1554 ext. 2651
- Product Service Manager – Donna Giancola
 - Email: donna.giancola@hp.com
 - Telephone: 410-643-7004

22 18 April 2007



***Vielen Dank
für Ihre Aufmerksamkeit***

Günter Kriebel

guenter.kriebel@hp.com

0171 3357 698

23 18 April 2007

